

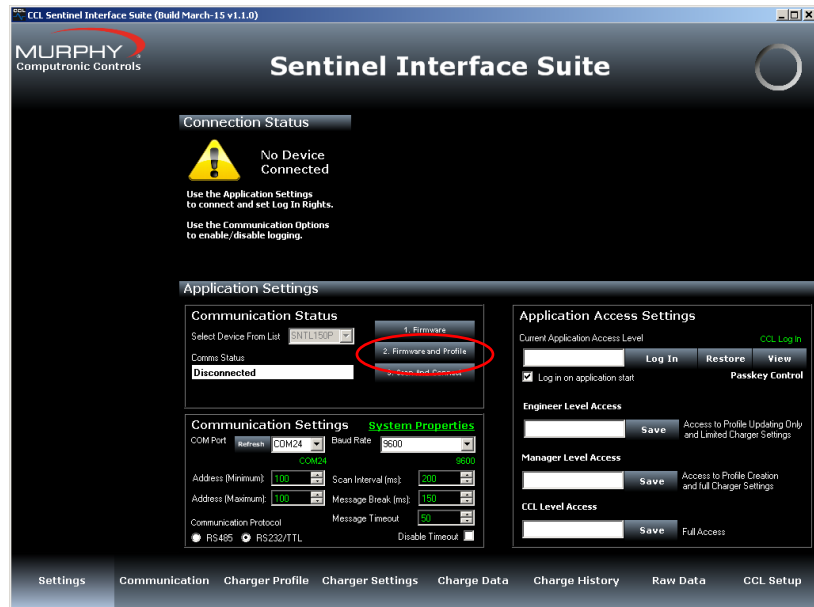
Updating firmware and full profile on SNTL150P using Interface Suite v1.1.0

Ensure com port settings and baud rate are correct.

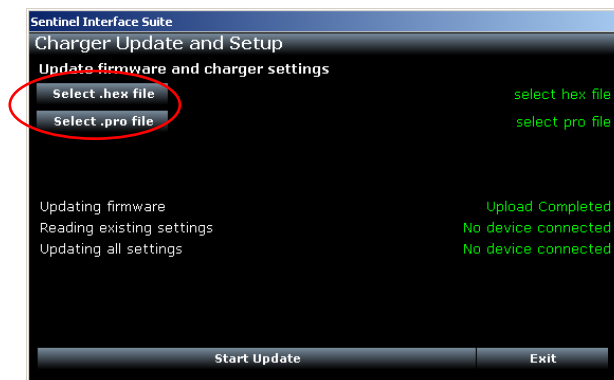
Baud Rate for SNTL150P should be 9600bps.

Ensure SNTL150P is connected but not powered before starting this process.

Select “Firmware and Profile” from main settings screen

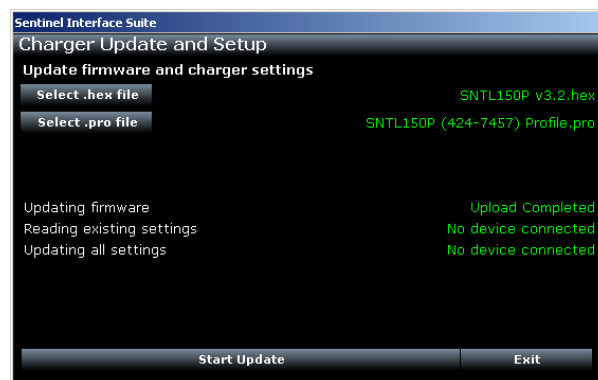


From the Charger Update and Setup screen, select the hex file and profile file for correct part number for product

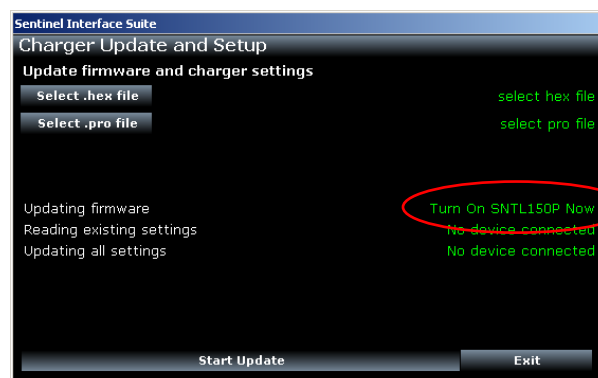


Files are checked and loaded, screen should read like shown.

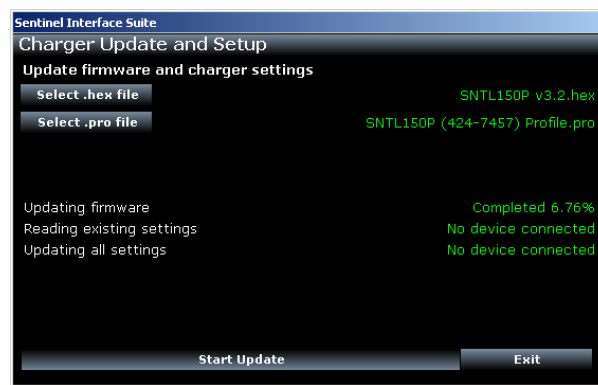
Select Start Update to commence



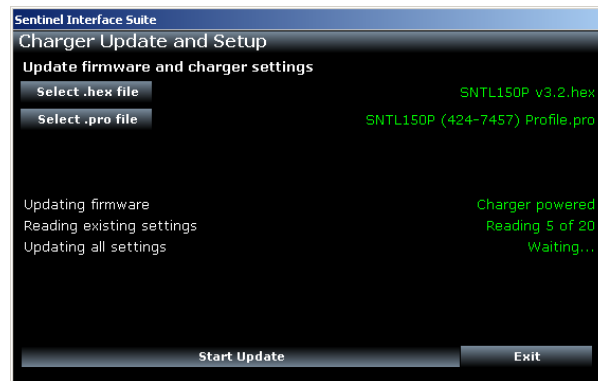
When interface suite instructs, turn the SNTL150P on.



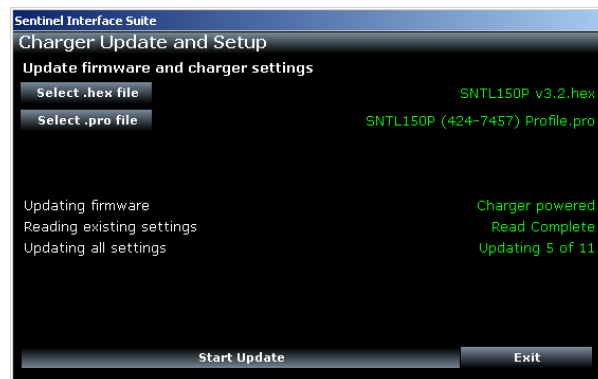
The interface will display process of firmware update



After upload complete, the interface will read all existing settings



After read is complete, the interface suite will ensure all settings are correct for the part number profile selected.



After update is complete, the interface will connect to charger and display normal screens.