



High Country Tek by Enovation Controls Hydraulic Generator Controller **HGC-2**

Electronic Control Solutions for the Global Fluid Power Industry

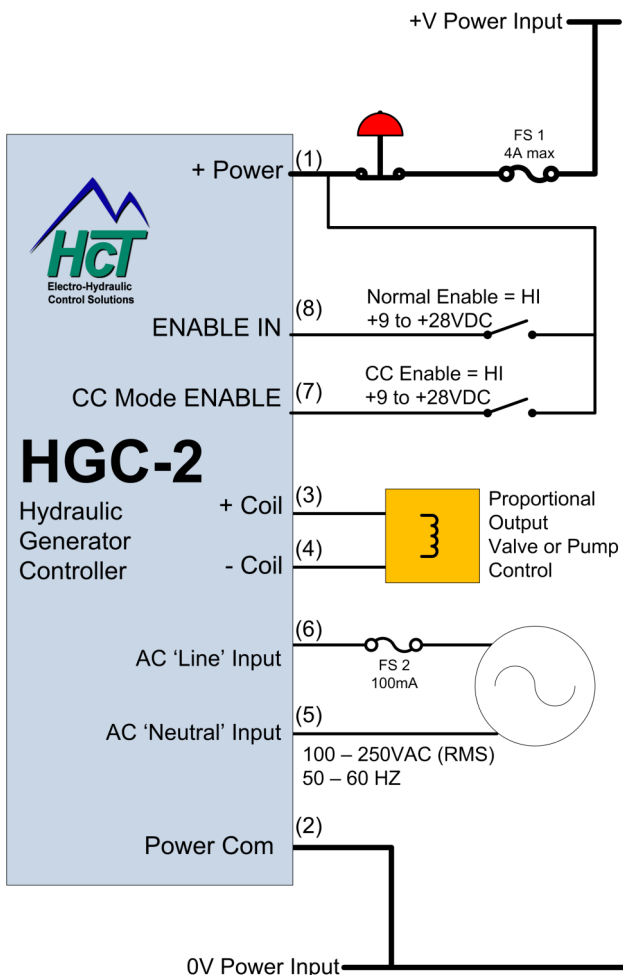
Product Feature Overview

The HGC-2 is designed to control the AC line voltage output of a hydraulically driven generator. Designed to close loop on the generator frequency output in order to precisely control the proportional output to the hydraulic motor.

- AC voltage generator controller for mobile or fixed applications
- Feedback input accepts 100 to 250VAC / 50 or 60Hz
- Windows™ software user interface for full configuration
- System "Status" indicator LED with blink code & data logging
- Safe, infra-red communications with PC for set-up/diagnostics



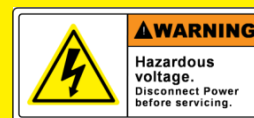
Electrical Connection Diagram:



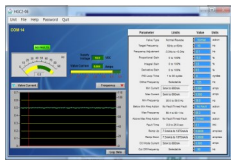
Controller Specification:

Housing Type	HCT unique 'encapsulated' block
Input Supply Voltage	9 to 28Vdc (<i>Absolute Maximum</i>)
Input Supply Current	Valve current + 50mA Quiescent (<i>Max</i>)
Command Inputs	2x option select switches (<i>On/Off</i>) 1x input for VAC feedback (100 to 250RMS, 50 or 60 ±3Hz)
Outputs	1x proportional PWM (600mA, 1.2A or 2.5A Models)
Proportional coil Dither Frequency	Software adjustable - 50 to 1000Hz
Module Connector	DT15-08PA, 8-way Male
Communication	Infra-red optical link - for isolation safety
Housing Material	Black, ABS
Encapsulation	Flameproof epoxy resin
Mounting	2x No.6 (4mm) screws
Temperature Range	-40 to +80°C (<i>Operational</i>)
NEMA/IP Rating	NEMA 6P/IP68

Beware of HIGH VOLTAGE when operating any generator system – high voltage can be LETHAL – observe ALL laws, by-laws and health & Safety recommendations for your immediate location, state and/or country.



HGC-2 Accessories:



Software

- PC set-up software
- System diagnostics
- Data logging features

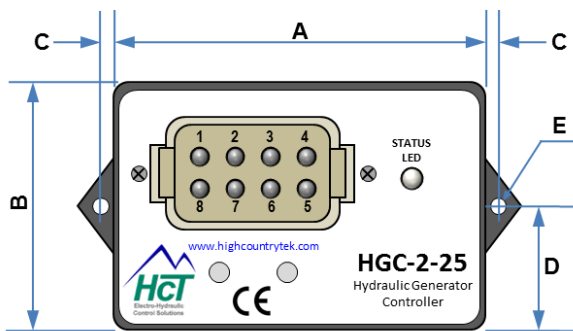
Note: Free download from support.enovationcontrols.com



Connectors / Cables

- 999-10228 Prototype harness
- 999-10166 Communication cable
- 999-10073 Mating connector kit

Dimensions:

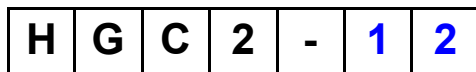


Notes:

- Controller weight is approx. 125g
- Mount to flat, cool surface.
- Use BOTH mounting lugs for security 2x No. 6 (4mm) screws

Label	Inches	Millimeters
A	3.0	76.2
B	2.0	50.8
C	0.25	6.4
D	1.0	25.4
E	0.188	4.80

Ordering Guide



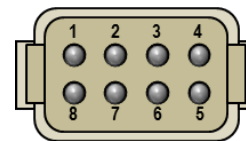
Output Current Range:

06	-	600mA current range
12	-	1200mA current range
25	-	2500mA current range

The current range represents the maximum current output available. The module output current should ideally just exceed or equal the valve selected.

Connector Details:

View of 8 way male module connector **DT15-08PA**



- Pin 1 +Vin, 9 to 28Vdc power supply input
- Pin 2 0V - Power input (GND)
- Pin 3 Proportional valve coil PWM output +
- Pin 4 Proportional valve coil PWM output -
- Pin 5 Feedback voltage input - AC neutral
- Pin 6 Feedback voltage input - AC line
- Pin 7 Controller **CC** mode enable input (high = enable)
- Pin 8 Controller enable input (high = enable)

CC = Constant Current mode (Open Loop - Ignores any feedback):
For initial set-up, system tuning or system de-bugging/fault finding



**High Country Tek
by Enovation Controls**
5311 S 122nd East Ave.
Tulsa, OK 74146
Tel: +1 (918) 317-4100
sales@enovationcontrols.com